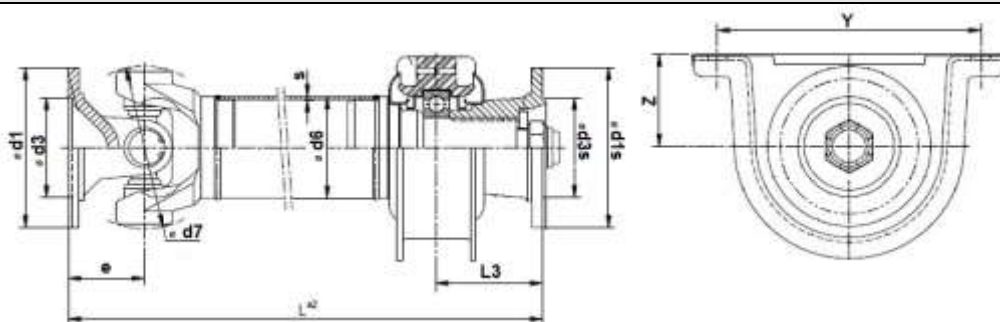
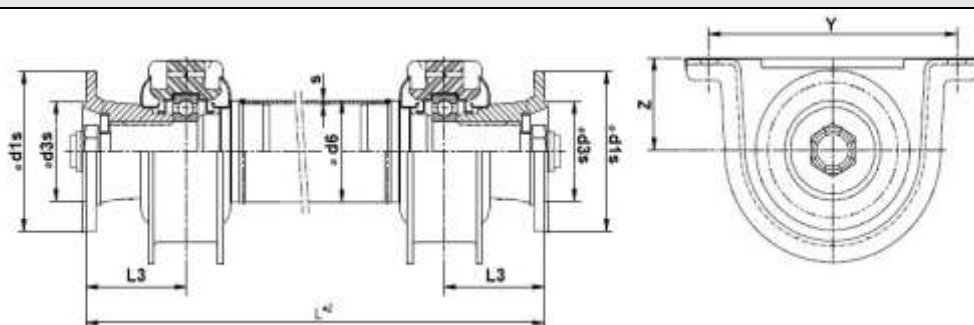


MdB= da 800 a 22000 Nm - MdG= da 1400 a 30000 Nm

Esecuzione Codice 3790



Esecuzione Codice 4790



Compatibile Con Serie	Flangia Supporto	L min	MdB Nm	MdG Nm	d1s	L3	Y	Z	Tube D6 +S
130M/131/43	SAE 1300	500	1800	2600	97	73.2	168.3	57.9	50.8x2.41 - 60x3 -76.2x2.41
131-43-141-152	SAE 1400	500	2400	3500	116	82.6	168.3	62.7	76.2x2.41 - 88.9x2.41 - 90x3
131-43-141-152	DIN 120	500	2400	3500	120	82.6	168.3	62.7	
141 - 152 - 161	DIN 120	500	4200	6000	120	78	168.3	59	
141 - 152 - 161	DIN 120	500	4200	6000	120	78	193.6	59	
141 - 152 - 161	XS/KV120	500	4200	6000	120	89.5	193.6	69	90x5.5 - 110x6 120x6 - 130x6 140x5
68/73	SAE 1800	500	17000	25000	203	110	200	62.7	
73/77	XS/KV180	500	22000	30000	180	86.5	230	88	
73/77	XS/KV180	500	22000	30000	180	107	220	88	