

MdB= 3500 Nm - MdG= 5000 Nm

Ingombro Rotazione 122 mm

Esecuzione Cod 42 Allungamento Standard La=70 mm	Tubo d6+S 76.2x2.41 / 88.9x2.41
---	------------------------------------

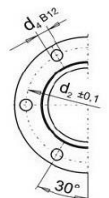
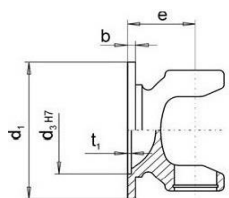
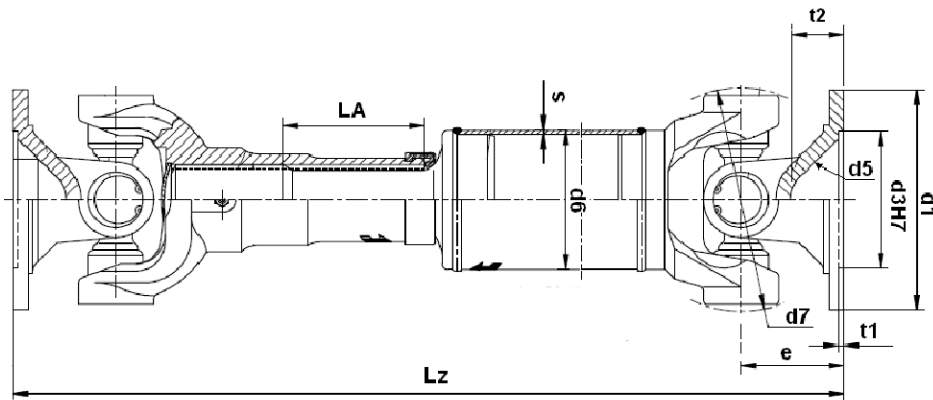


Fig. 1

Fig. 2

Fig. 3

DIN	Fig.	d1	d4	d3	d2	e	β max.	Lz min. La=70
120	3	120	8x10.20	75	101.5	65	25°	430
150	3	150	8x10.20	90	130	65	25°	430
150	3	150	8x12.20	90	130	65	25°	430
120	3	120	8x10.20	75	101.5	65	25°	430

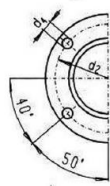
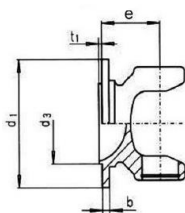


Fig. 4

SAE	Fig.	d1	d4	d3	d2	e	β max.	Lz min. La=70
1400	4	116	4x12.20	69.85	95.27	65	25°	430
1500	4	146	4x14.20	95.25	120.67	51	20°	402

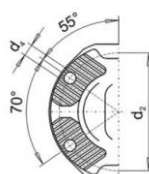
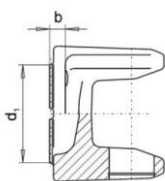


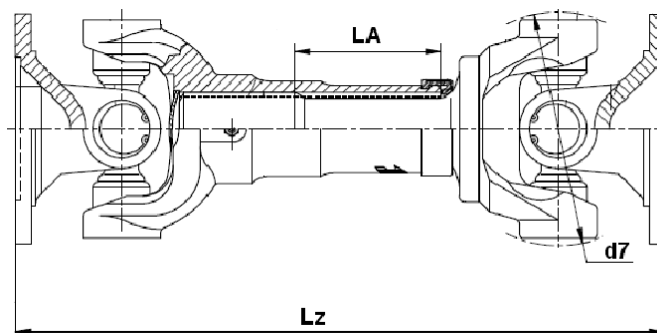
Fig. 5

KV/XS	Fig.	d1	d4	d3	d2	e	β max.	Lz min. La=70
120	5	120	4x11.10	KV/XS	100	75	25°	450
150	5	150	4x13.10	KV/XS	130	63	25°	426

MdB= 3500 Nm - MdG= 5000 Nm

Ingombro Rotazione 122 mm

Esecuzione Cod 39 - Scorrevole corta



Flangia	Lz minima	La
DIN 120	300	30
DIN150	300	30
SAE 1400	300	30
SAE 1500	272	30
KV/XS120	320	30
KV/XS150	296	30