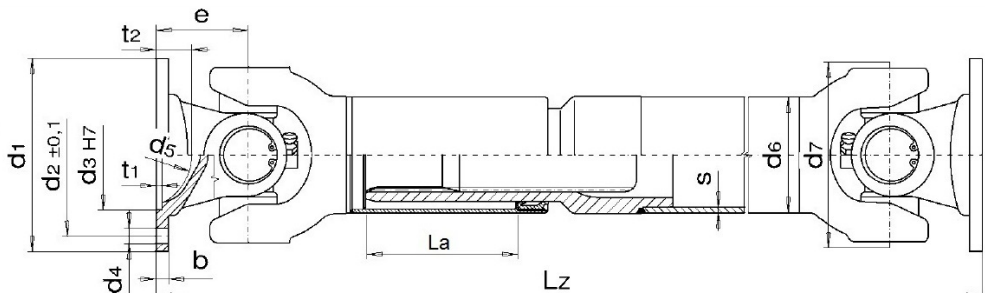
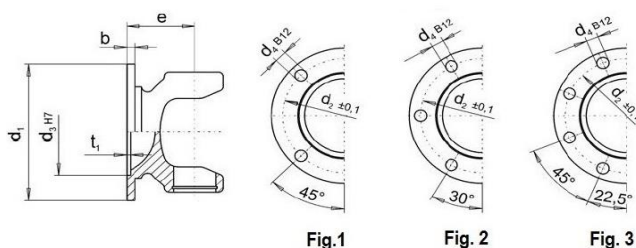


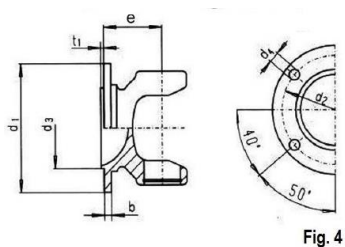
MdB= 2000 Nm - MdG= 3000 Nm

Ingombro Rotazione 98 mm

Esecuzione Cod 46 Allungamento Standard La=80 mm	Tubo d6+S 54x4
	



DIN	Fig.	d1	d4	d3	d2	e	β max.	Lz min. La=80
90	1	90	4x8.2	47	74.5	58	25°	410
100	2	100	6x8.2	57	84	58	25°	410
120	3	120	8x8.2	75	101.5	58	25°	410
120	3	120	8x10.2	75	101.5	58	25°	410



SAE	Fig.	d1	d4	d3	d2	e	β max.	Lz min. La=80
1300	4	97	4x10.2	60.32	79.35	58	25°	410
1400	4	116	4x12.2	69.85	95.27	58	25°	410
1400	4	116	4x11.1	69.85	95.27	58	25°	410

MdB= 2000 Nm - MdG= 3000 Nm

Ingombro Rotazione 98 mm

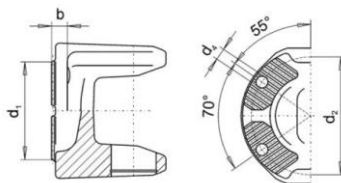
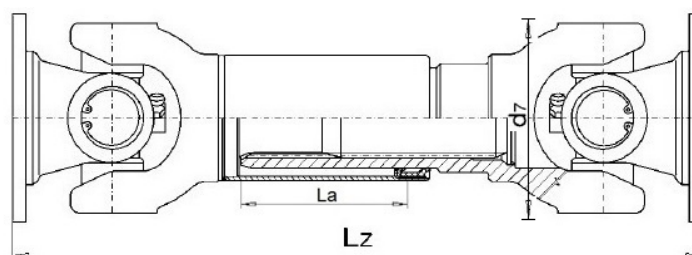


Fig.5

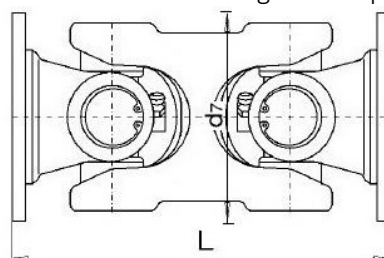
KV	Fig.	d1	d4	d3	d2	E	β max.	Lz min. La=80
120	5	120	4x11.10	KV/XS	100	54	25°	402

Esecuzione Cod 44 - Scorrevole corta



Flangia	Lz minima con e=46	Lz minima con e=58	La
DIN 90	280	304	20
DIN 100	280	304	20
DIN 120	280	304	20
SAE 1300	280	304	20
SAE 1400	280	304	20
KV/XS120		304	20

Esecuzione cod 315 - giunto doppio



FLANGIA	L con e=46	L con e=58
DIN 100	162	186
DIN 120	162	186
SAE 1300	162	186
SAE 1400	162	186