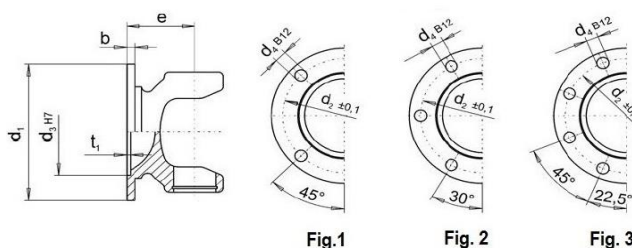
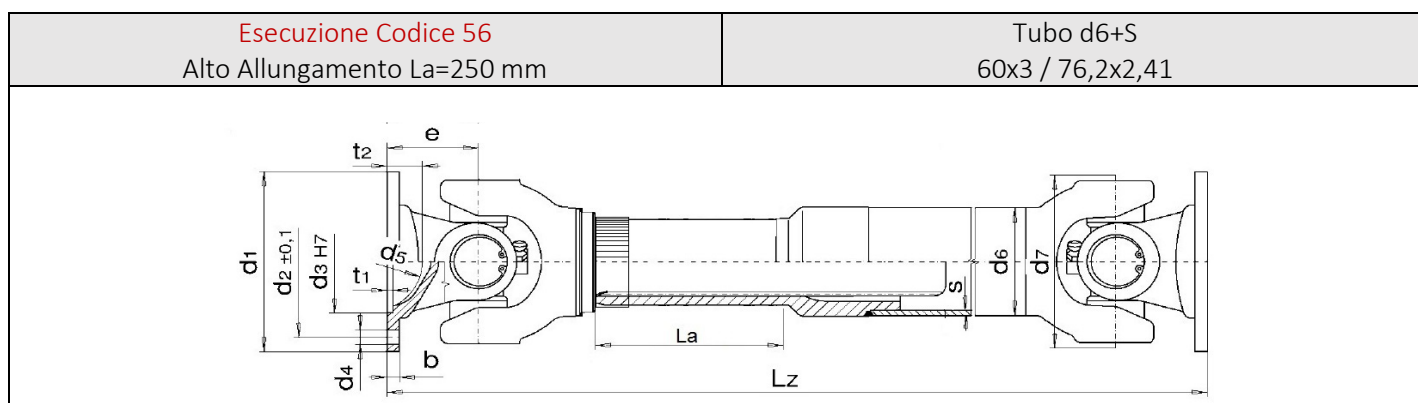
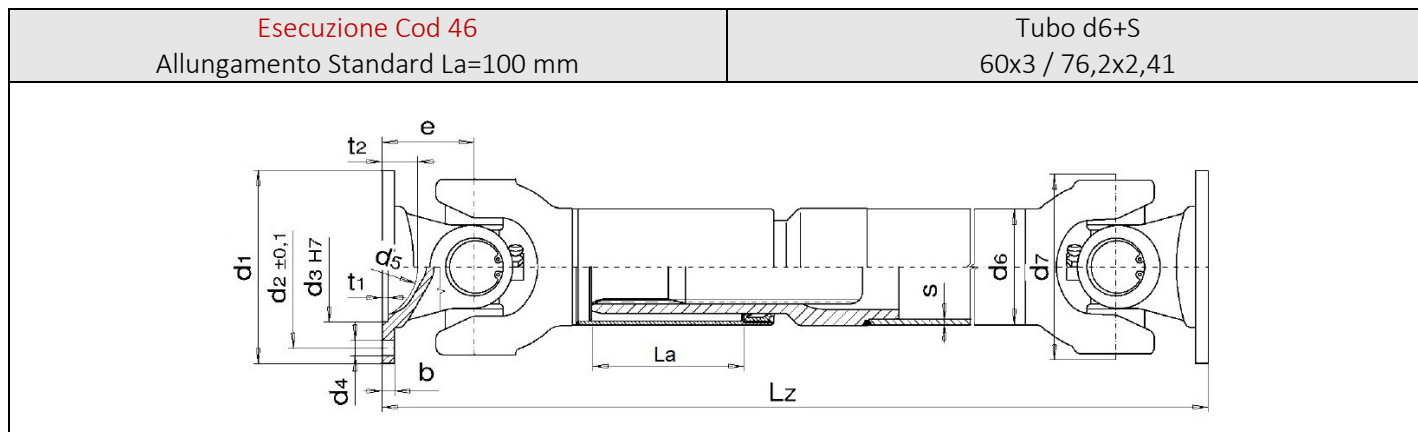
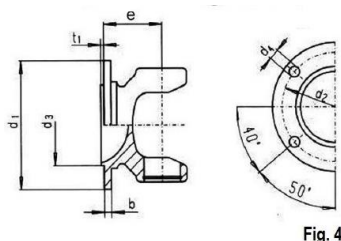


MdB= 1800 Nm - MdG= 2600 Nm

Ingombro Rotazione 98 mm



DIN	Fig.	d1	d4	d3	d2	e	β max. d6 60	β max. d6 76.2	Lz min. La=100	Lz min. La= 250
90	1	90	4x8.20	47	74.50	58	33°	25°	410	610
100	2	100	6x8.20	57	84	58	33°	25°	410	610
120	3	120	8x8.20	75	101.50	58	33°	25°	410	610
120	3	120	8x10.20	75	101.50	58	33°	25°	410	610



SAE	Fig.	d1	d4	d3	d2	e	β max. d6 60	β max. d6 76.2	Lz min. La=100	Lz min. La= 250
1300	4	97	4x10.20	60.32	79.35	58	33°	25°	410	610
1400	4	116	4x12.20	69.85	95.27	58	33°	25°	410	610
1400	4	116	4x11.10	69.85	95.27	58	33°	25°	410	610

MdB= 1800 Nm - MdG= 2600 Nm

Ingombro Rotazione 98 mm

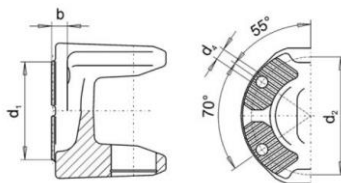
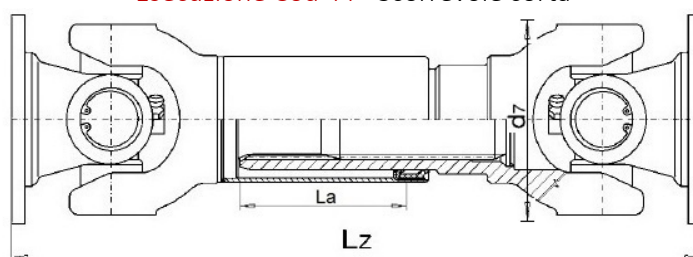


Fig.5

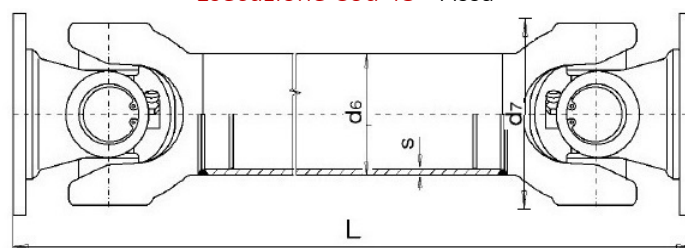
KV	Fig.	d1	d4	d3	d2	E	β max. d6 60	β max. d6 76.2	Lz min. La=100	Lz min. La= 250
120	5	120	4x11.10	KV/XS	100	54	25°	25°	402	602

Esecuzione Cod 44 - Scorrevole corta



Flangia	Lz minima con e=46	Lz minima con e=58	La
DIN 90	234	258	20
DIN 100	234	258	20
DIN 120	234	258	20
SAE 1300	234	258	20
SAE 1400	234	258	20
KV/XS120		258	20

Esecuzione Cod 48 - Fissa

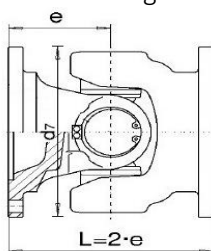


Flangia	L minima	Tubo
DIN 90	252	60x3 / 76.2x2.41
DIN 100	252	60x3 / 76.2x2.41
DIN 120	252	60x3 / 76.2x2.41
SAE 1300	252	60x3 / 76.2x2.41
SAE 1400	252	60x3 / 76.2x2.41
KV/XS120	268	60x3 / 76.2x2.41

MdB= 1800 Nm - MdG= 2600 Nm

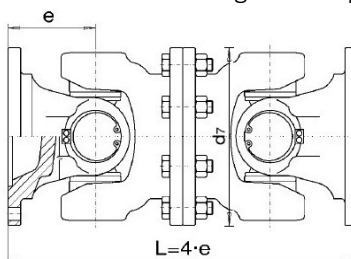
Ingombro Rotazione 98 mm

Esecuzione cod 314 - giunto semplice



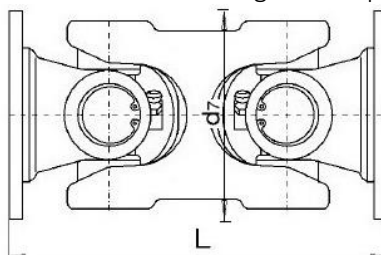
FLANGIA	L
DIN 90	116
DIN 100	116
DIN 120	116
SAE 1300	116
SAE 1400	116

Esecuzione cod 7675 - giunto doppio



FLANGIA	L
DIN 90	232
DIN 100	232
SAE 1100	232
SAE 1300	232
SAE 1400	232

Esecuzione cod 315 - giunto doppio



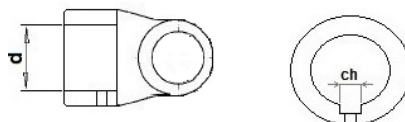
FLANGIA	L con e=46	L con e=58
DIN 100	162	186
DIN 120	162	186
SAE 1300	162	186
SAE 1400	162	186

MdB= 1800 Nm - MdG= 2600 Nm

Ingombro Rotazione 98 mm

<p>Esecuzione Cod 26 Scorrevole a mozzo La=100mm</p>	<p>Tubo d6+S 60x3 / 76.2x2.41</p>

<p>Esecuzione Cod 36 Scorrevole a mozzo alto allungamento La=250mm</p>	<p>Tubo d6+S 60x3 / 76.2x2.41</p>

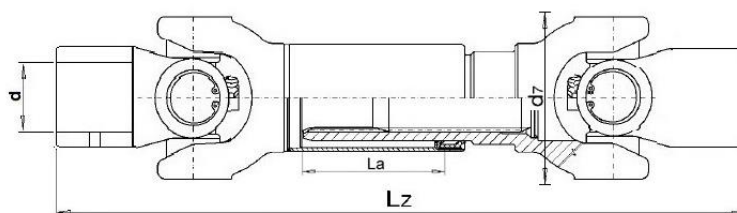


d. H7	Chiavetta	Lz min. La=100	Lz min. La= 250
24÷38	8÷12	440	650

MdB= 1800 Nm - MdG= 2600 Nm

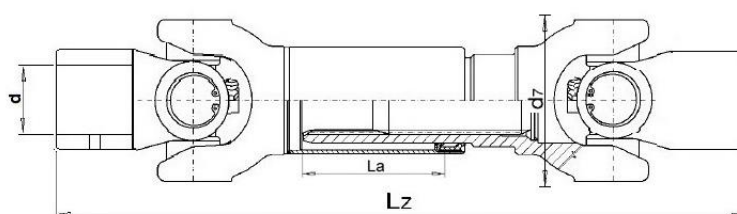
Ingombro Rotazione 98 mm

Esecuzione Cod 34 - Scorrevole corta



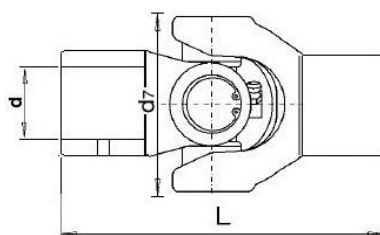
Flangia	Lz minima	La
24÷38	264	20

Esecuzione Cod 38 - Fissa a mozzo



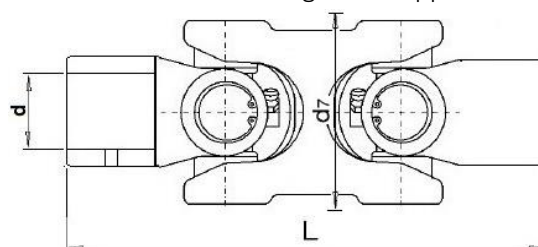
Flangia	Lz minima	Tubo
24÷38	282	60x3 / 76.2x2.41

Esecuzione cod 214 - giunto semplice a mozzo



FLANGIA	L
24÷38	146

Esecuzione cod 315 - giunto doppio ad H



FLANGIA	L
24÷38	200