

MdB= 1200 Nm - MdG= 1930 Nm

Ingombro Rotazione 98 mm

Esecuzione Cod 42
Allungamento Standard La=55 mm

Tubo d6+S
50,8x2,41 / 76,2x2,41

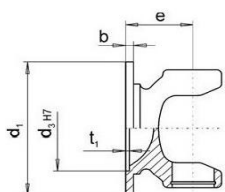
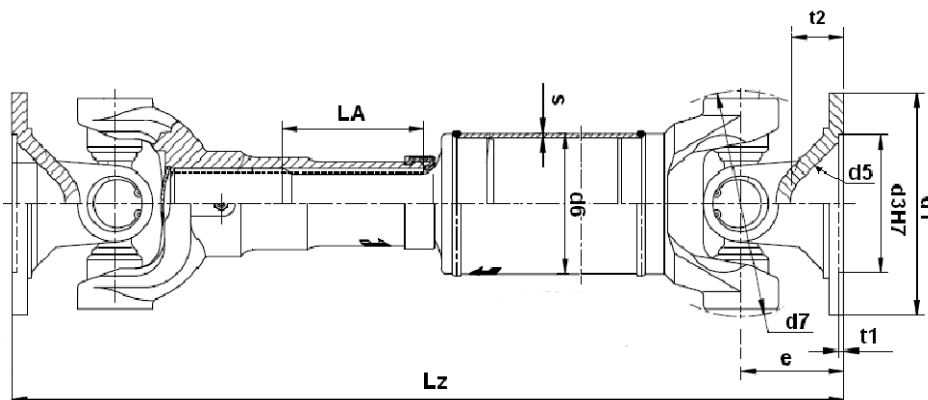


Fig.1



Fig. 2



Fig. 3

DIN	Fig.	d1	d4	d3	d2	e	β max.	Lz min. La=55
90	1	90	4x8.2	47	74.50	50	22°	340
100	2	100	6x8.2	57	84	53	22°	346
120	3	120	8x10.2	75	101.50	52	22°	344

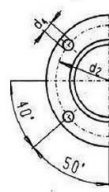
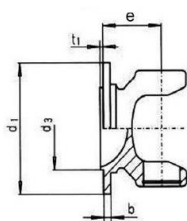


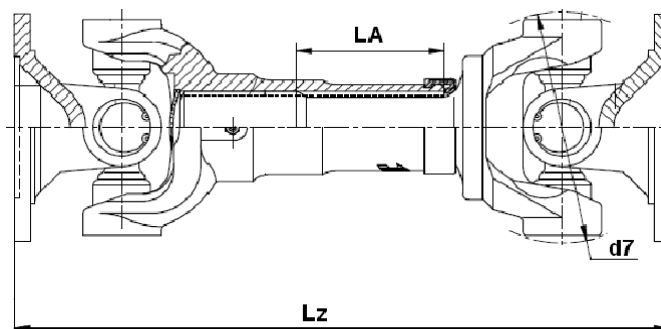
Fig. 4

SAE	Fig.	d1	d4	d3	d2	e	β max.	Lz min. La=55
1300	4	97	4x10.2	60.32	79.35	35	22°	310
1400	4	116	4x12.2	69.85	95.27	35	22°	310

MdB= 1200 Nm - MdG= 1930 Nm

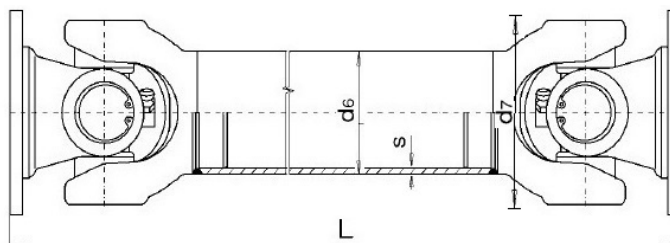
Ingombro Rotazione 98 mm

Esecuzione Cod 39 - Scorrevole corta



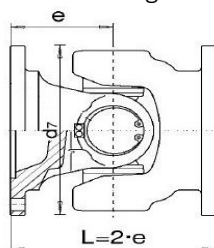
Flangia	Lz minima	La
DIN 90	250	30
DIN 100	256	30
DIN 120	254	30
SAE 1300	220	30
SAE 1400	220	30

Esecuzione Cod 48 - Fissa



Flangia	L minima	Tube
DIN 90	234	50.8x2.41 / 76.2x2.41
DIN 100	240	50.8x2.41 / 76.2x2.41
DIN 120	238	50.8x2.41 / 76.2x2.41
SAE 1300	204	50.8x2.41 / 76.2x2.41
SAE 1400	204	50.8x2.41 / 76.2x2.41

Esecuzione cod 314 - giunto semplice

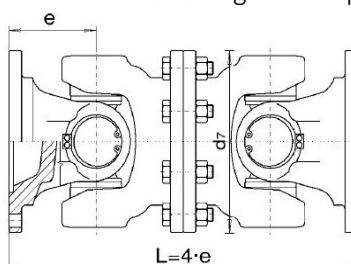


FLANGIA	L
DIN 90	100
DIN 100	106
DIN 120	104
SAE 1300	70
SAE 1400	70

MdB= 1200 Nm - MdG= 1930 Nm

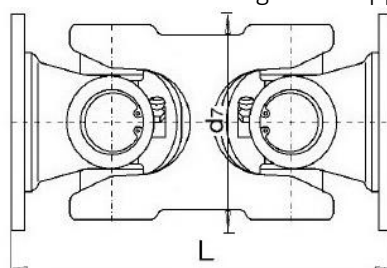
Ingombro Rotazione 98 mm

Esecuzione cod 7675 - giunto doppio



FLANGIA	L
DIN 90	200
DIN 100	212
DIN 120	208
SAE 1300	140
SAE 1400	140
DIN 90	200

Esecuzione cod 315 - giunto doppio



FLANGIA	L
DIN 90	171
DIN 100	177
DIN 120	175
SAE 1300	141
SAE 1400	141
DIN 90	171