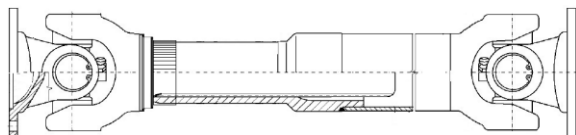
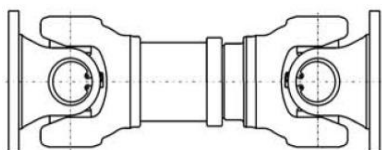


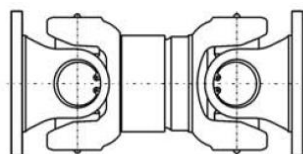
Alberi Cardanici con Allungamento Codice 46



Alberi Cardanici con Alto Allungamento Codice 56



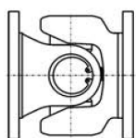
Alberi Cardanici Corti con Allungamento Codice 44



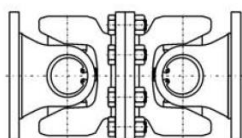
Alberi Cardanici Extra Corti con Allungamento Codice 4496  
Angolo di lavoro ridotto



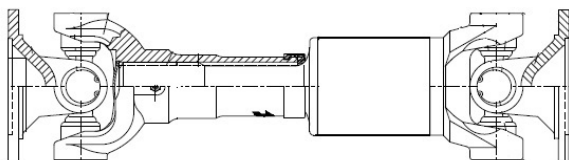
Alberi Cardanici Fissi Codice 48



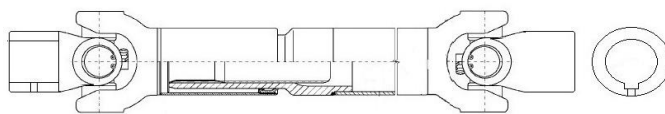
Giunto Semplice Codice 314



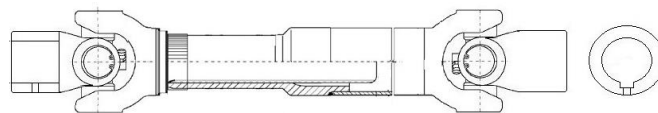
Giunto Doppio Codice 7675



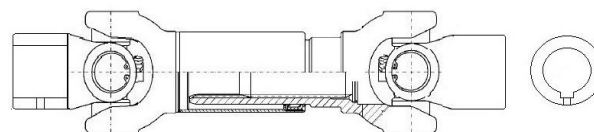
Alberi Cardanici con Allungamento Codice 42



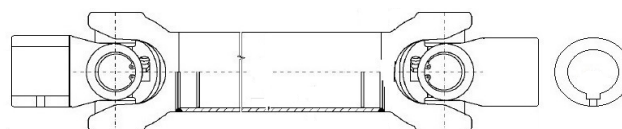
Alberi Cardanici Scorrevoli a Mozzo Codice 26



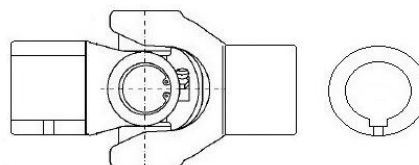
Alberi Cardanici Scorrevoli Alto Allungamento Codice 36



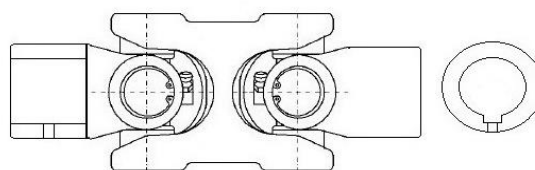
Alberi Cardanici Scorrevoli Corti con Allungamento Codice 34



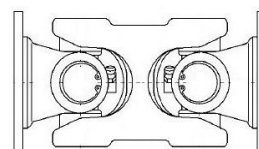
Alberi Cardanici Fissi a Mozzo Codice 38



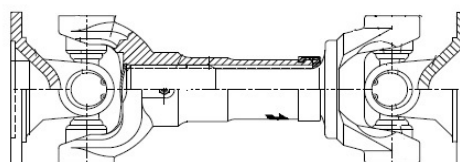
Giunto Semplice a Mozzo Codice 214



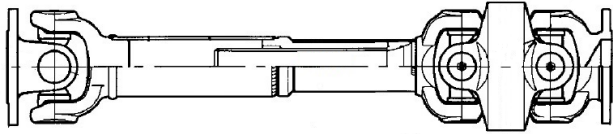
Giunto Doppio a Mozzo Codice 215



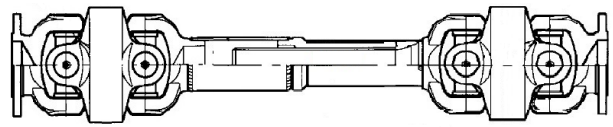
Giunto Doppio ad H Codice 315



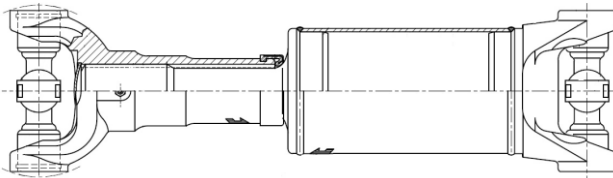
Alberi Cardanici Corti con Allungamento Codice 39



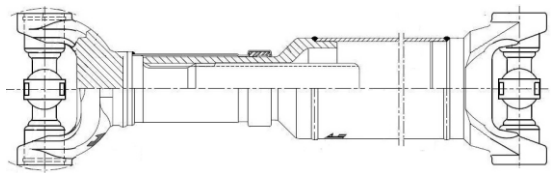
Alberi Cardanici con Giunto Omocinetico ad angolo ampio  
Codice OC1



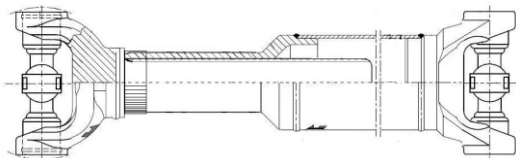
Alberi Cardanici con Giunto Omocinetico ad angolo ampio  
codice OC2



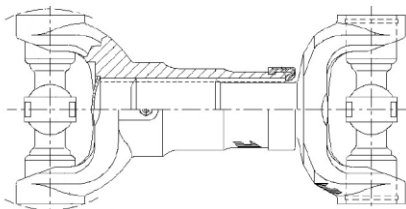
Alberi Cardanici End Joke con Allungamento Codice OJ



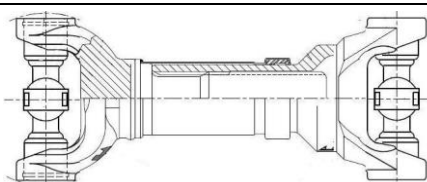
Alberi Cardanici End Joke con Allungamento Codice OJ46



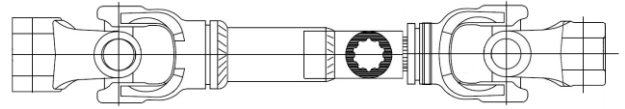
Alberi Cardanici End Joke con Alto Allungamento Codice OJ56



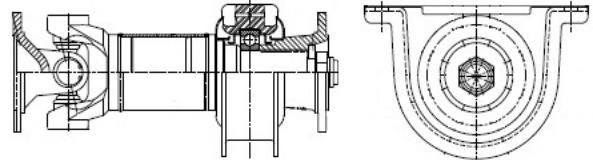
Alberi Cardanici End Joke corto con Allungamento Codice OJ39



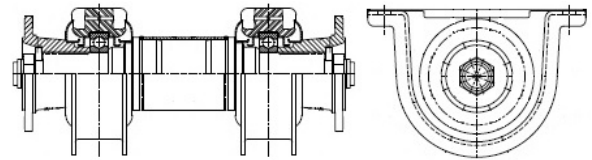
Alberi Cardanici End Joke corto con Allungamento Codice OJ44



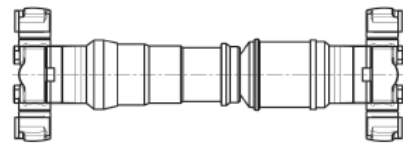
Alberi Cardanici Scorrevoli Alto Allungamento e Angolo Ampio  
Codice MX



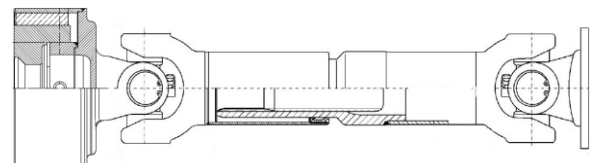
Alberi Cardanici senza Allungamento con un Supporto Codice 3790



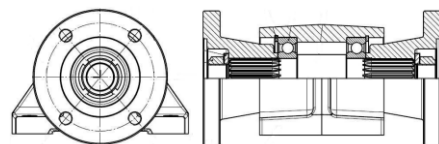
Alberi Cardanici senza Allungamento con doppio Supporto Codice  
4790



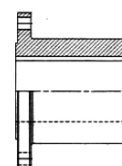
Alberi Cardanici a Blocchetti



Alberi Cardanici con Allungamento e Giunto Elastico Codice GE



Supporto Rigido Codice SR



Controflange Codice C