

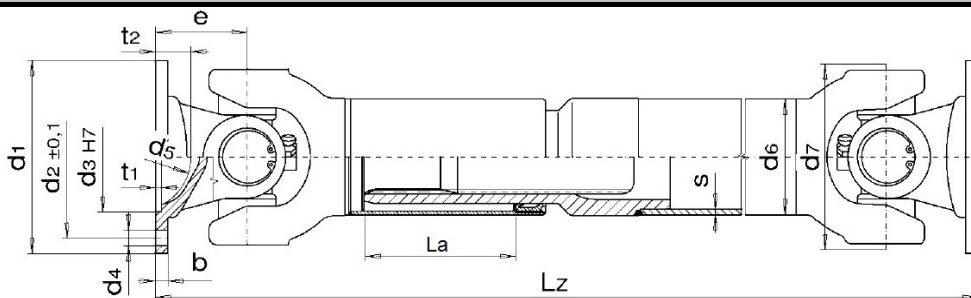
Dimensione Crociere: 65x172

MdB= 22000 Nm

SERIE 77

MdG= 30000 Nm

Esecuzione  
Codice 46



Allungamento

Standard

La=110 mm

Tube d6+S

140x5

Ingombro

Rotazione

204 mm

### Flange »DIN«

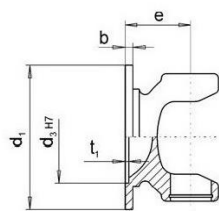


Fig.1

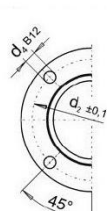


Fig. 2

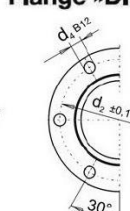


Fig. 3

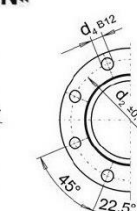
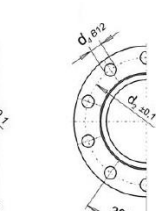


Fig.3B



### Flange »SAE«

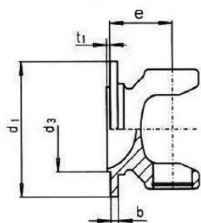


Fig. 4

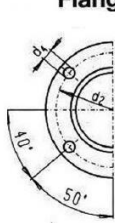


Fig. 4B

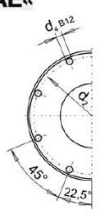
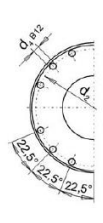


Fig. 4C



### Flange »XS /KV«

70° Secondo ISO 12667 resp. ISO 8667

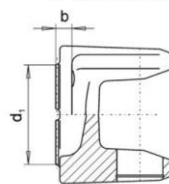
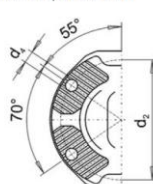


Fig.5



				DIN					
	Figura	d1	d4	d3	e	d2	β max.	Lz min. realizzabile	
180	3	180	8x16.2	110	110	155.5	25°	840	
180	3B	180	10x16.2	110	110	155.5	25°	840	
225	3	225	8x16.2	140	110	196	25°	840	
225	3B	225	10x16.2	140	110	196	25°	840	
250	3	250	8x18.2	140	110	218	25°	840	

				SAE					
	Figura	d1	d4	d3	e	d2	β max.	Lz min. realizzabile	
1800	4C	204	12x10.2	196.8	110	196.8	25°	840	
1800	4C	204	12x11.2	196.8	110	196.8	25°	840	

				XS/KV					
	Figura	d1	d4	d3	e	d2	β max.	Lz min. realizzabile	
180	5	180	4x15.1	KV/XS	100	150	25°	820	

-Flange speciali a richiesta

- La = allungamento speciale superiore a quello indicato è realizzabile a richiesta

# MK CARDAN

ALBERI CARDANICI



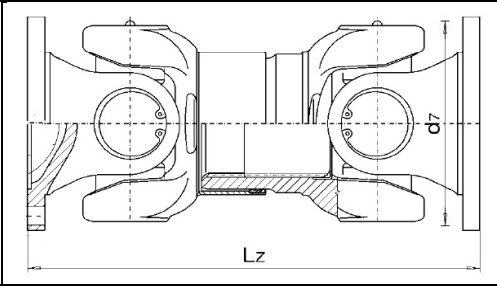
MdB= 22000 Nm

SERIE 77

MdG= 30000 Nm

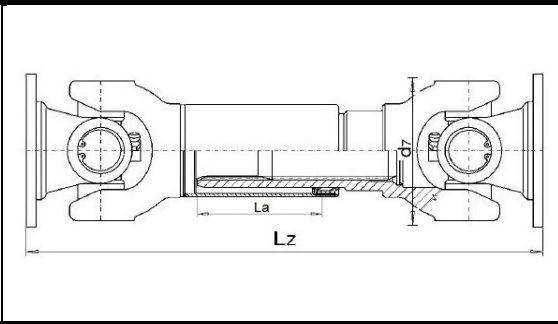
Dimensione Crociere: 65x172

Esecuzione  
Codice  
44.96  
Scorrevole  
Extra  
Corta



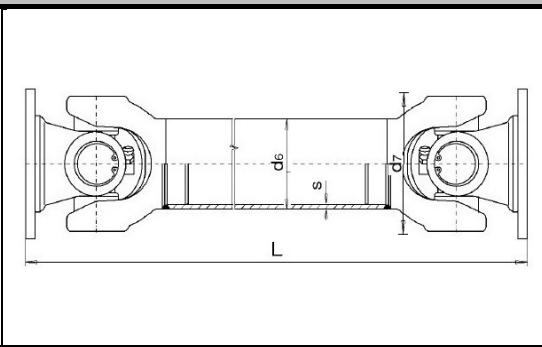
Flangia	e	$\beta$ max	Lz minima realizzabile	La
DIN 180	110	7°	455	25
DIN 225	110	7°	455	25
DIN 250	110	7°	455	25
SAE 1800	110	7°	455	25
KV/XS180	100	7°	435	25
KV/XS180	75	7°	385	25

Esecuzione  
Codice 44  
Scorrevole  
Corta



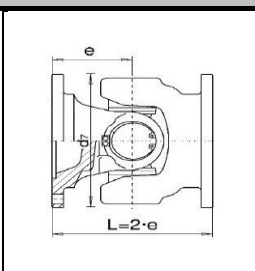
Flangia	e	$\beta$ max	Lz minima realizzabile	La
DIN 180	110	25°	630	40
DIN 225	110	25°	630	40
DIN 250	110	25°	630	40
SAE 1800	110	25°	630	40
KV/XS180	100	25°	610	40

Esecuzione  
Codice 48  
Fissa con  
Tubo



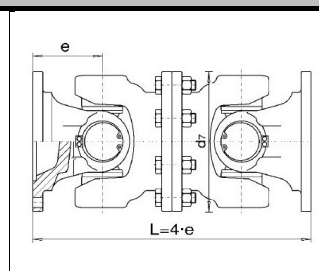
Flangia	e	$\beta$ max	L minima realizzabile
DIN 180	110	25°	500
DIN 225	110	25°	500
DIN 250	110	25°	500
SAE 1800	110	25°	500
KV/XS180	100	25°	480

Esecuzione  
Codice  
314  
Giunto  
Semplice



Flangia	L
DIN 180	220
DIN 225	220
DIN 250	220
SAE 1800	220

Esecuzione  
Codice  
7675  
Giunto  
Doppio



Flangia	L
DIN 180	440
DIN 225	440
DIN 250	440
SAE 1800	440

L / Lz superiore ed inferiore a quella indicata è realizzabile a richiesta – La = allungamento speciale superiore a quello indicato è realizzabile a richiesta