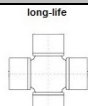


# MK CARDAN

ALBERI CARDANICI



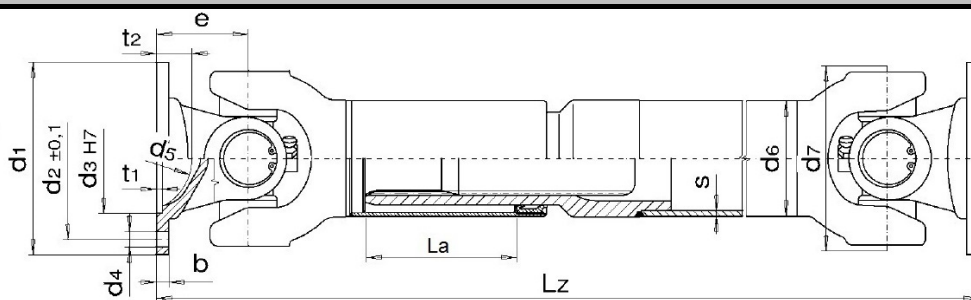
MdB= 11000 Nm

SERIE 68

MdG= 14000 Nm

Dimensione Crociere: 52x133

Esecuzione  
Codice 46



Allungamento  
Standard  
La=110 mm

Tubo d6+S  
90x5.5

Ingombro  
Rotazione  
160 mm

### Flange »DIN«

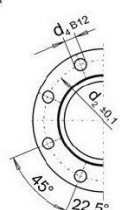
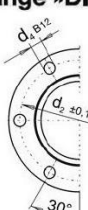
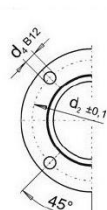
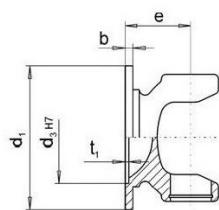


Fig.1

Fig. 2

Fig. 3

Fig.3B

### Flange »SAE«

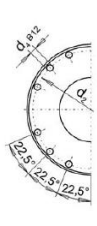
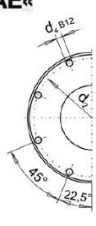
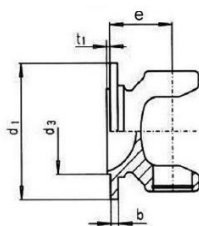


Fig. 4

Fig. 4B

Fig. 4C

### Flange »XS /KV«

70° Secondo ISO 12667 resp. ISO 8667

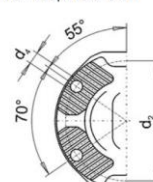
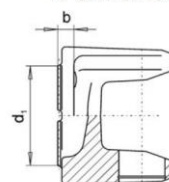


Fig.5

### DIN

	Figura	d1	d4	d3	e	d2	β max.	Lz minima realizzabile	
	150	3	150	8x12.2	90	90	130	32°	595
	180	3	180	8x14.2	110	94	155.5	32°	603
	180	3	180	8x16.2	110	94	155.5	32°	603
	180	3B	180	10x16.2	110	94	155.5	32°	603

### SAE

	Figura	d1	d4	d3	e	d2	β max.	Lz minima realizzabile	
	1600	4B	176	8x10.2	168.22	91	155.52	32°	597
	1800	4C	204	12x10.2	196.8	94.5	196.8	32°	604
	1800	4C	204	12x11.2	196.8	94.5	196.8	32°	604

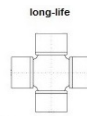
### XS/KV

	Figura	d1	d4	d3	e	d2	β max.	Lz minima realizzabile	
	150	5	150	4x13.1	KV/XS	87	130	32°	589
	180	5	180	4x15.1	KV/XS	93.5	150	32°	602

-Flange speciali a richiesta - La = allungamento speciale superiore a quello indicato è realizzabile a richiesta

# MK CARDAN

ALBERI CARDANICI



MdB= 11000 Nm

SERIE 68

MdG= 14000 Nm

Dimensione Crociere: 52x133

**Esecuzione  
Codice  
44.96  
Scorrevole  
Extra  
Corta**

Flangia	e	$\beta$ max	Lz minima realizzabile	La
DIN 150	90	15°	356	25
DIN 180	94	15°	364	25
SAE 1500	92	15°	360	25
SAE 1600	91	15°	358	25
SAE 1800	94.5	15°	365	25
KV/XS150	72	15°	320	25
KV/XS150	87	15°	350	25
KV/XS180	93.5	15°	363	25

**Esecuzione  
Codice 44  
Scorrevole  
Corta**

Flangia	e	$\beta$ max	Lz minima realizzabile	La
DIN 150	90	32°	425	30
DIN 180	94	32°	433	30
SAE 1500	92	32°	429	30
SAE 1600	91	32°	427	30
SAE 1800	94.5	32°	434	30
KV/XS150	87	32°	419	30
KV/XS180	93.5	32°	432	30

**Esecuzione  
Codice 48  
Fissa con  
Tubo**

Flangia	e	$\beta$ max	L minima realizzabile
DIN 150	90	32°	410
DIN 180	94	32°	418
SAE 1500	92	32°	414
SAE 1600	91	32°	412
SAE 1800	94.5	32°	419
KV/XS150	87	32°	404
KV/XS180	93.5	32°	417

**Esecuzione  
Codice  
314  
Giunto  
Semplice**

Flangia	L
DIN 150	180
DIN 180	188
SAE 1500	184
SAE 1600	182
SAE 1800	189

**Esecuzione  
Codice  
7675  
Giunto  
Doppio**

Flangia	L
DIN 150	360
DIN 180	376
SAE 1500	368
SAE 1600	364
SAE 1800	378

L / Lz superiore ed inferiore a quella indicata è realizzabile a richiesta – La = allungamento speciale superiore a quello indicato è realizzabile a richiesta