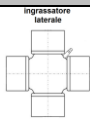


MK CARDAN

ALBERI CARDANICI



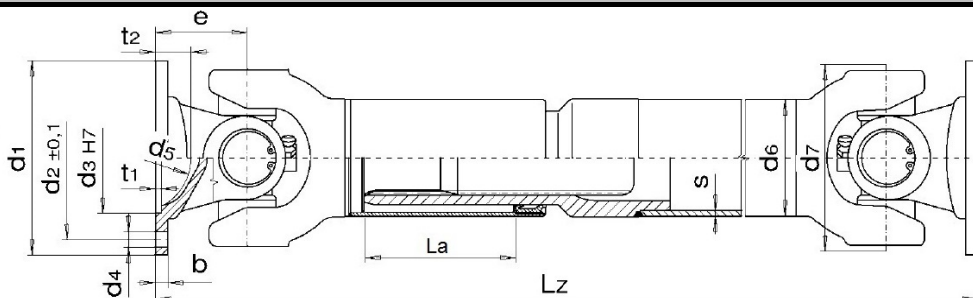
Dimensione Crociere: 39.7x115.9

MdB= 4200 Nm

SERIE 161

MdG= 6000 Nm

Esecuzione
Codice 46

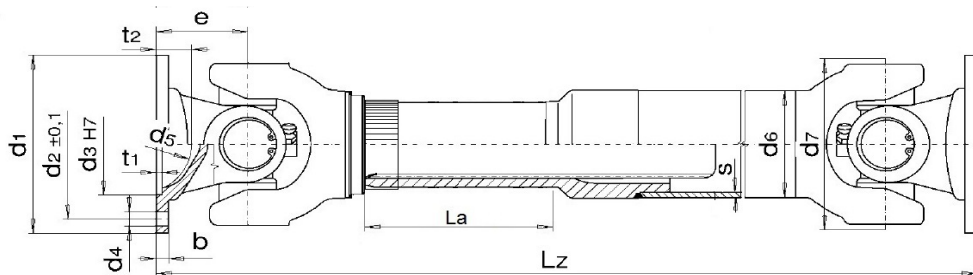


Allungamento
Standard
La=110 mm

Tubo d6+S
88.9x2.41

Ingombro
Rotazione
136 mm

Esecuzione
Codice 56



Alto
Allungamento
La=250 mm

Tubo d6+S
88.9x2.41

Ingombro
Rotazione
136 mm

Flange »DIN«

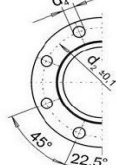
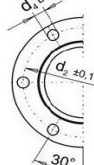
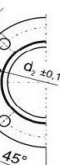
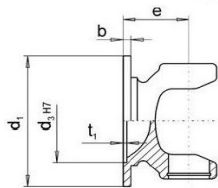


Fig.1

Fig. 2

Fig. 3

Flange »SAE«

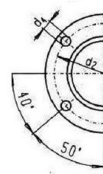
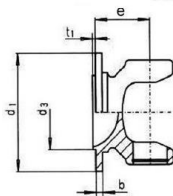


Fig. 4

Flange »XS /KV«

70° Secondo ISO 12667 resp. ISO 8667

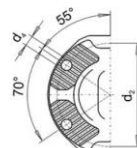
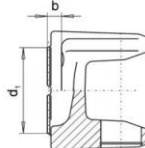


Fig.5

DIN

	Figura	d1	d4	d3	d2	e	β max.	Lz minima realizz. per La=110	Lz minima realizz. per La= 250
120	3	120	8x8.20	75	101.5	72	30°	499	680
120	3	120	8x10.20	75	101.5	72	30°	499	680
150	3	150	8x12.20	90	130	82.5	30°	520	701

SAE

	Figura	d1	d4	d3	d2	e	β max.	Lz minima realizz. per La=110	Lz minima realizz. per La= 250
1500	4	146	4x14.2	95.25	120.67	63.5	20°	482	663

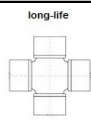
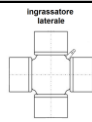
XS/KV

	Figura	d1	d4	d3	d2	e	β max.	Lz minima realizz. per La=110	Lz minima realizz. per La= 250
120	5	120	4x11.1	KV/XS	100	70	25°	495	676
150	5	150	4x13.1	KV/XS	130	77	25°	509	690

-Flange speciali a richiesta

MK CARDAN

ALBERI CARDANICI



MdB= 4200 Nm

SERIE 161

MdG= 6000 Nm

Dimensione Crociere: 39.7x115.9

Esecuzione Codice 44.96 Scorrevole Extra Corta		Flangia	e	β max	Lz minima realizzabile	La
		DIN 120	72	7°	264	20
		DIN 150	82.5	7°	285	20
		SAE 1500	63.5	7°	247	20
		SAE 1500	40	7°	200	20
		KV/XS120	70	7°	260	20
		KV/XS150	77	7°	274	20

Esecuzione Codice 44 Scorrevole Corta		Flangia	e	β max	Lz minima realizzabile	La
		DIN 120	72	25°	314	20
		DIN 150	82.5	25°	335	20
		SAE 1500	63.5	20°	297	20
		KV/XS120	70	25°	310	20
		KV/XS150	77	25°	324	20

Esecuzione Codice 48 Fissa con Tubo		Flangia	e	L minima realizzabile
		DIN 120	72	354
		DIN 150	82.5	375
		SAE 1500	63.5	337
		KV/XS120	70	350
		KV/XS150	77	364

Esecuzione Codice 314 Giunto Semplice		Flangia	L
		DIN 120	144
		DIN 150	165
		SAE 1500	127

Esecuzione Codice 7675 Giunto Doppio		Flangia	L
		DIN 120	288
		DIN 150	330
		SAE 1500	254

L / Lz superiore ed inferiore a quella indicata è realizzabile a richiesta – La = allungamento speciale superiore a quello indicato è realizzabile a richiesta