

MdB= 6000 Nm - MdG= 8400 Nm

Ingombro Rotazione 145mm

Esecuzione Cod 46
Allungamento Standard La=110 mm

Tubo d6+S
100x3

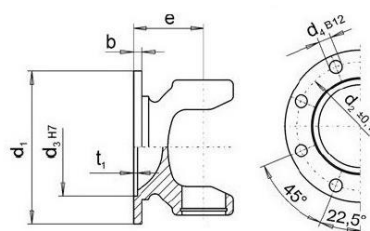
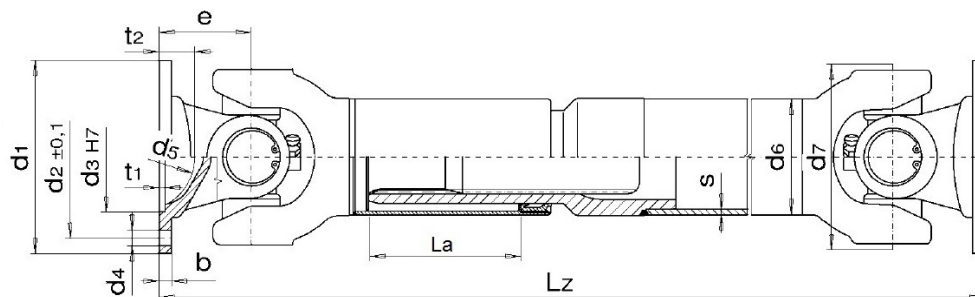


Fig. 3

DIN	Fig.	d1	d4	d3	d2	e	β max	Lz min. La=110
150	3	150	8x12.2	90	130	95	25°	565

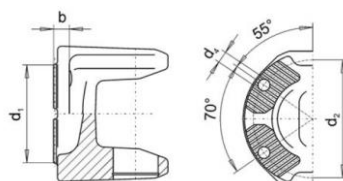


Fig. 5

KV	Fig.	d1	d4	d3	d2	e	β max.	Lz min.
120	5	120	4x11.1	KV/XS	100	78	25°	556
150	5	150	4x13.1	KV/XS	130	75	25°	550