

MdB= 115 KNm - MdG= 150 KNm - MdW= 50 KNm

Ingombro Rotazione 315 mm

Esecuzione Cod 46
Allungamento Standard La=110 mm

Tubo d6+S
177x17.5

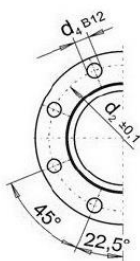
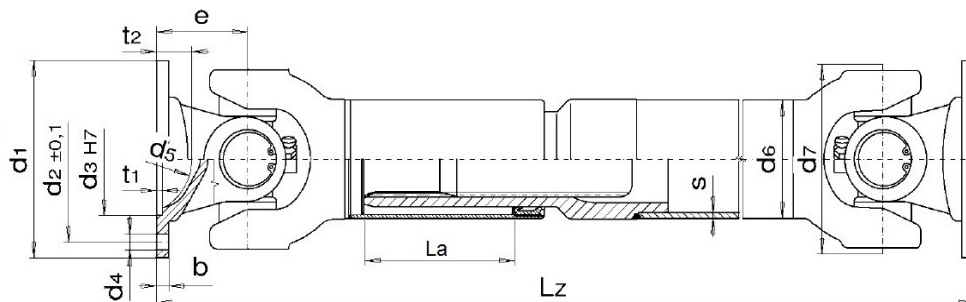


Fig. 3

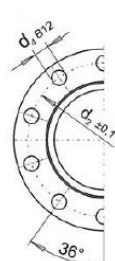


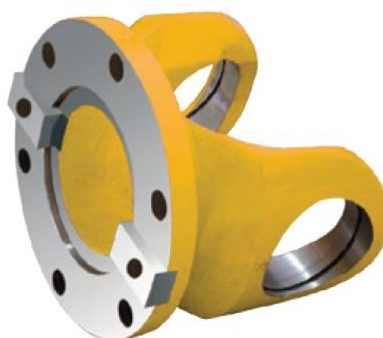
Fig. 3B

DIN	Fig.	d1	d4	d3	d2	e	β max	Lz min. La=110
315	3	315	8x22.2	175	280	180	15°	1240
350	3B	350	10x22.2	220	310	180	15°	1240

Flange speciali a richiesta disponibile anche con chiavetta trasversale



Flangia con connessione a denti



Flangia con chiavetta parziale
Flangia con chiavetta intera

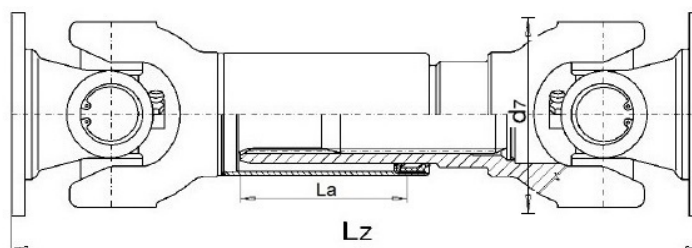


Flangia con connessione a blocchi

MdB= 115 KNm - MdG= 150 KNm - MdW= 50 KNm

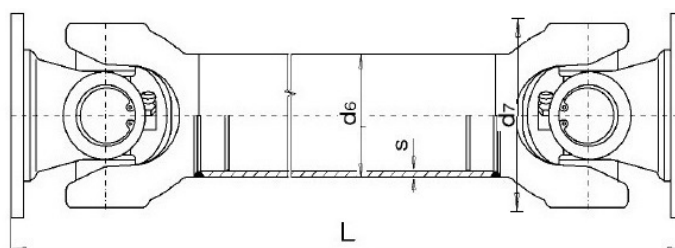
Ingombro Rotazione 315 mm

Esecuzione Cod 44 - Scorrevole corta



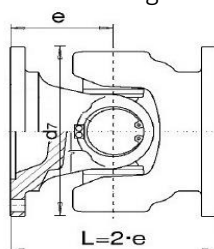
Flangia	Lz minima	La
DIN 315	950	40
DIN 350	950	40

Esecuzione Cod 48 - Fissa



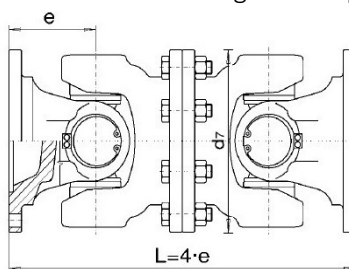
Flangia	L minima	Tube
DIN 315	800	177x17.5
DIN 350	800	177x17.5

Esecuzione cod 314 - giunto semplice



FLANGIA	L
DIN 315	360
DIN 350	360

Esecuzione cod 7675 - giunto doppio



FLANGIA	L
DIN 315	720
DIN 350	720