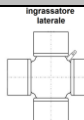


# MK CARDAN

ALBERI CARDANICI



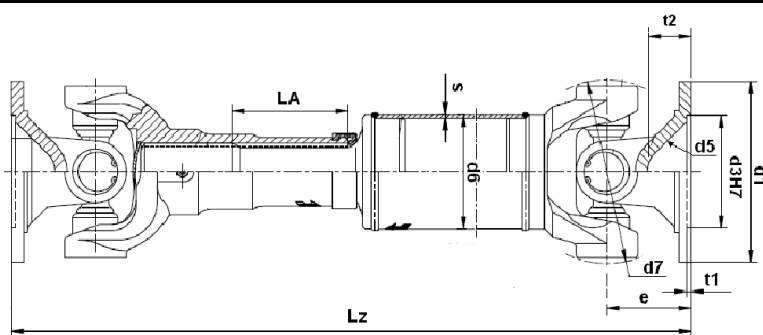
Dimensione Crociere: 34.9x106.3

MdB= 3500 Nm

SERIE 148

MdG= 5000 Nm

Esecuzione  
Codice 42



Allungamento  
Standard  
La=70 mm

Tubo d6+S  
76.2x2.41  
88.9x2.41

Ingombro  
Rotazione  
122 mm

Flange »DIN«

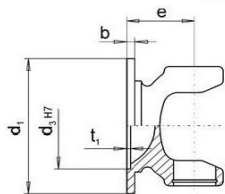


Fig.1

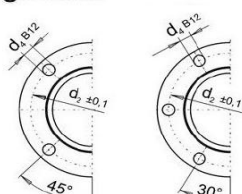


Fig. 2

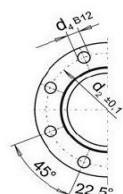


Fig. 3

Flange »SAE«

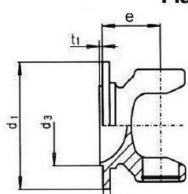


Fig. 4

Flange »XS / KV«

70° Secondo ISO 12667 resp. ISO 8667

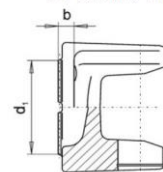


Fig.5

DIN

	Figura	d1	d4	d3	d2	e	β max.	Lz minima realizzabile per La=70
120	3	120	8x8.20	75	101.5	65	25°	430
120	3	120	8x10.20	75	101.5	65	25°	430
150	3	150	8x10.20	90	130	65	25°	430
150	3	150	8x12.20	90	130	65	25°	430

SAE

	Figura	d1	d4	d3	d2	e	β max.	Lz minima realizzabile per La=70
1400	4	116	4x12.2	69.85	95.27	65	25°	430
1500	4	146	4x14.2	95.25	120.67	51	20°	402

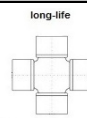
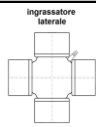
XS / KV

	Figura	d1	d4	d3	d2	e	β max.	Lz minima realizzabile per La=70
120	5	120	4x11.1	KV/XS	100	75	25°	450
150	5	150	4x13.1	KV/XS	130	63	25°	426

-Flange speciali a richiesta

# MK CARDAN

ALBERI CARDANICI



MdB= 3500 Nm

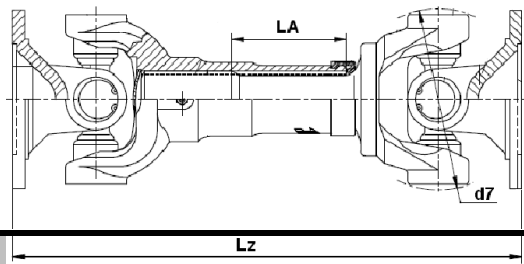
SERIE 148

MdG= 5000 Nm

$\beta$  max= 22°

Dimensione Crociere: 34.9x106.3

Esecuzione  
Codice 39  
Scorrevole  
Corta



Flangia	e	Lz minima realizzabile	La
DIN 120	65	300	30
DIN150	65	300	30
SAE 1400	65	300	30
SAE 1500	51	272	30
KV/XS120	75	320	30
KV/XS150	63	296	30

L / Lz superiore ed inferiore a quella indicata è realizzabile a richiesta – La = allungamento speciale superiore a quello indicato è realizzabile a richiesta