

MdB= 35000 Nm - MdG= 48000 Nm

Ingombro Rotazione 250 mm

Esecuzione Cod 46
Allungamento Standard La=110 mm

Tubo d6+S
170x10

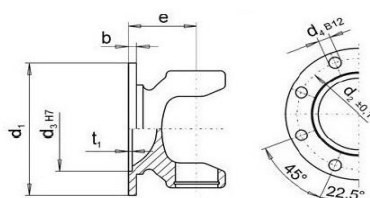
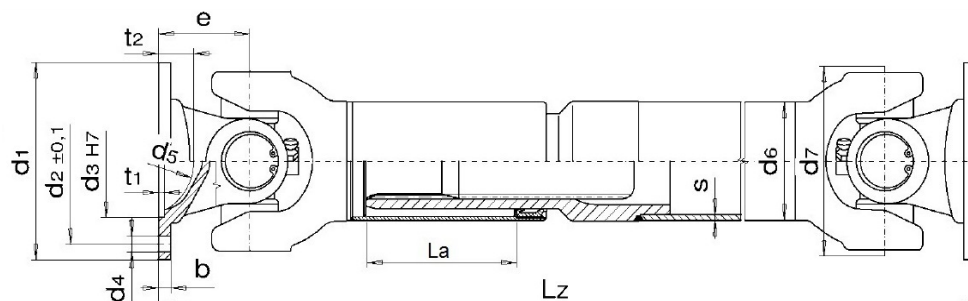


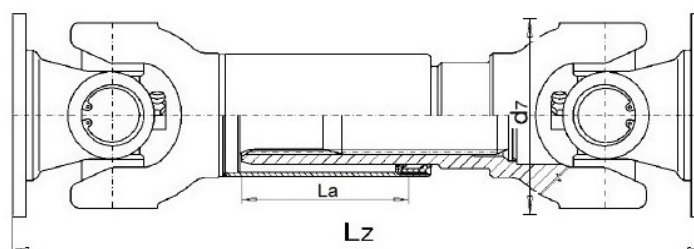
Fig. 3

DIN	Fig.	d1	d4	d3	d2	e	β max	Lz min. La=110
250	3	250	8x18.2	140	218	125	20°	880
285	3	285	8x20.2	175	245	125	20°	880

MdB= 35000 Nm - MdG= 48000 Nm

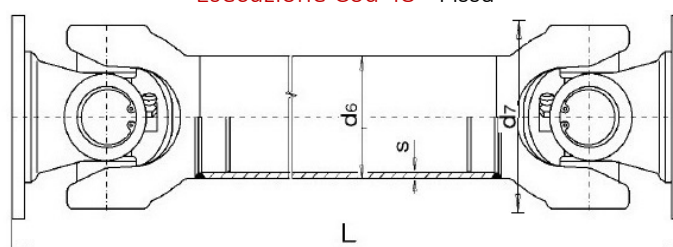
Ingombro Rotazione 250 mm

Esecuzione Cod 44 - Scorrevole corta



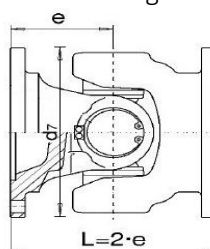
Flangia	Lz minima	La
DIN 250	770	40
DIN 285	770	40

Esecuzione Cod 48 - Fissa



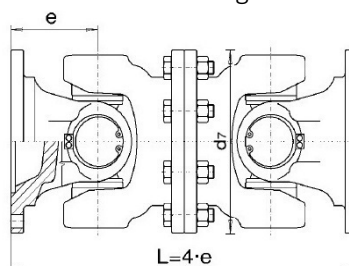
Flangia	L minima	Tubo
DIN 250	578	170x10
DIN 285	578	170x10

Esecuzione cod 314 - giunto semplice



FLANGIA	L
DIN 250	250
DIN 285	250

Esecuzione cod 7675 - giunto doppio



FLANGIA	L
DIN 250	500
DIN 285	500