

MdB= 28000 Nm - MdG= 35000 Nm

Ingombro Rotazione 215 mm

Esecuzione Cod 46  
Allungamento Standard La=110 mm

Tubo d6+S  
140x5

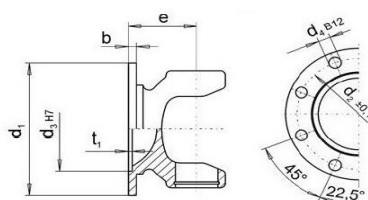
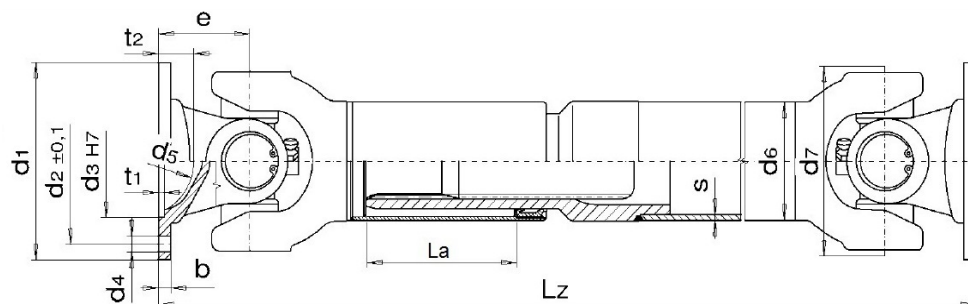


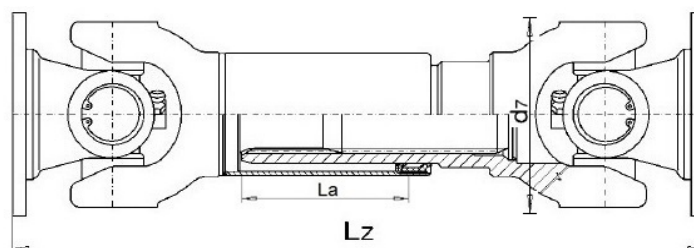
Fig. 3

DIN	Fig.	d1	d4	d3	d2	e	$\beta$ max	Lz min. La=110
225	3	225	8x16.2	140	196	108	25°	850
250	3	250	8x18.2	140	218	108	25°	850

MdB= 28000 Nm - MdG= 35000 Nm

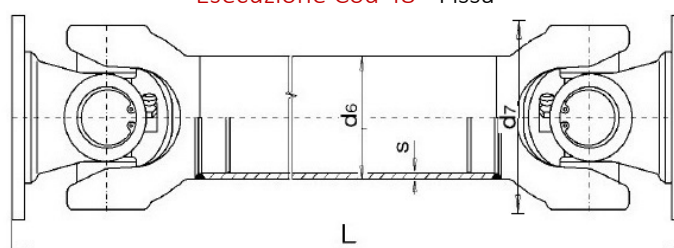
Ingombro Rotazione 215 mm

### Esecuzione Cod 44 - Scorrevole corta



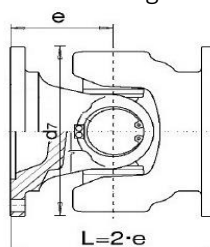
Flangia	Lz minima	La
DIN 225	530	40
DIN 250	530	40

### Esecuzione Cod 48 - Fissa



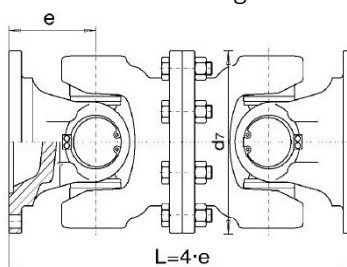
Flangia	L minima	Tubo
DIN 225	545	140x5
DIN 250	545	140x5

### Esecuzione cod 314 - giunto semplice



FLANGIA	L
DIN 225	216
DIN 250	216

### Esecuzione cod 7675 - giunto doppio



FLANGIA	L
DIN 225	432
DIN 250	432