

MdB= 22000 Nm - MdG= 30000 Nm

Ingombro Rotazione 204 mm

Esecuzione Cod 46
Allungamento Standard La=110 mm

Tubo d6+S
140x5

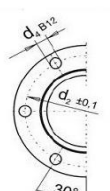
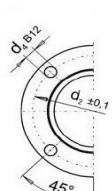
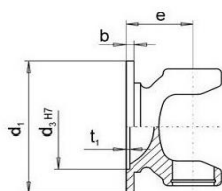
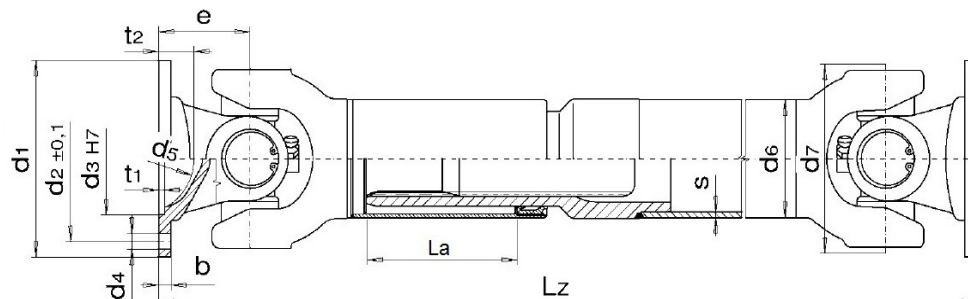


Fig.1

Fig. 2

Fig. 3

Fig.3B

DIN	Fig.	d1	d4	d3	d2	e	β max	Lz min. La=110
180	3	180	8x16.2	110	155.5	110	25°	750
180	3B	180	10x16.2	110	155.5	110	25°	750
225	3	225	8x16.2	140	196	110	25°	750
225	3B	225	10x16.2	140	196	110	25°	750
250	3	250	8x18.2	140	218	110	25°	750

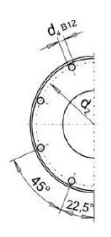
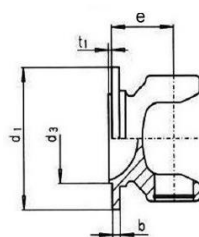


Fig. 4

Fig. 4B

Fig. 4C

SAE	Fig.	d1	d4	d3	d2	e	β max	Lz min. La=110
1800	4C	204	12x10.20	196.8	196.8	110	25°	750
1800	4C	204	12x11.20	196.8	196.8	110	25°	750

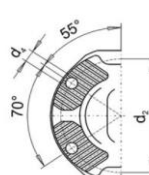
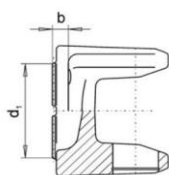


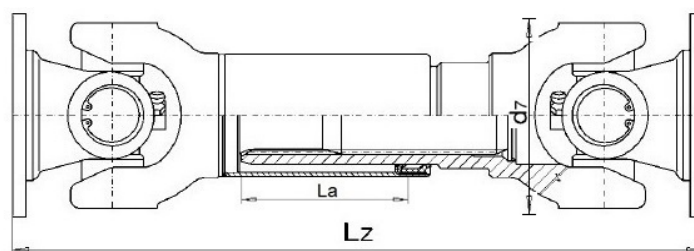
Fig.5

KV	Fig.	d1	d4	d3	d2	e	β max.	Lz min. La=110
180	5	180	4x15.10	KV/XS	150	100	25°	730

MdB= 22000 Nm - MdG= 30000 Nm

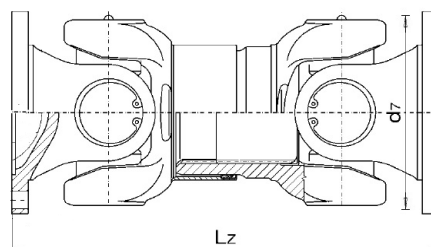
Ingombro Rotazione 204 mm

Esecuzione Cod 44 - Scorrevole corta



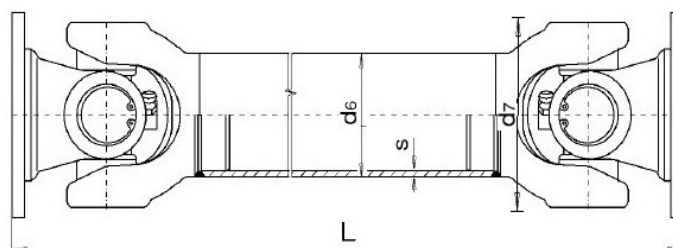
Flangia	Lz minima	La
DIN 180	630	40
DIN 225	630	40
DIN 250	630	40
SAE 1800	630	40
KV/XS180	610	40

Esecuzione Cod 4496 – scorrevole extra corta



Flangia	L minima	La
DIN 180	455	25
DIN 225	455	25
DIN 250	455	25
SAE 1800	455	25
KV/XS180	435	25
KV/XS180	385	25

Esecuzione Cod 48 - Fissa

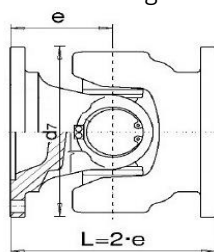


Flangia	L minima	Tubo
DIN 180	500	140x5
DIN 225	500	140x5
DIN 250	500	140x5
SAE 1800	500	140x5
KV/XS180	480	140x5

MdB= 22000 Nm - MdG= 30000 Nm

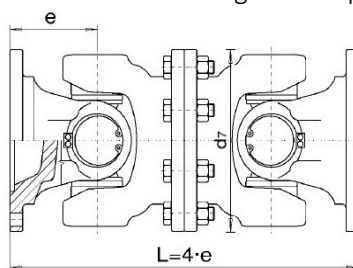
Ingombro Rotazione 204 mm

Esecuzione cod 314 - giunto semplice



FLANGIA	L
DIN 180	220
DIN 225	220
DIN 250	220
SAE 1800	220

Esecuzione cod 7675 - giunto doppio



FLANGIA	L
DIN 180	440
DIN 225	440
DIN 250	440
SAE 1800	440