

MdB= 17000 Nm - MdG= 25000 Nm

Ingombro Rotazione 178 mm

Esecuzione Cod 46
Allungamento Standard La=110 mm

Tubo d6+S
110x6 / 120x6

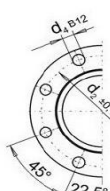
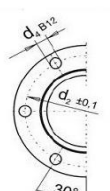
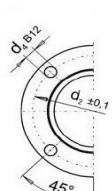
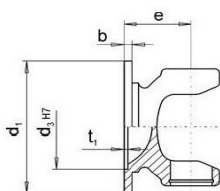
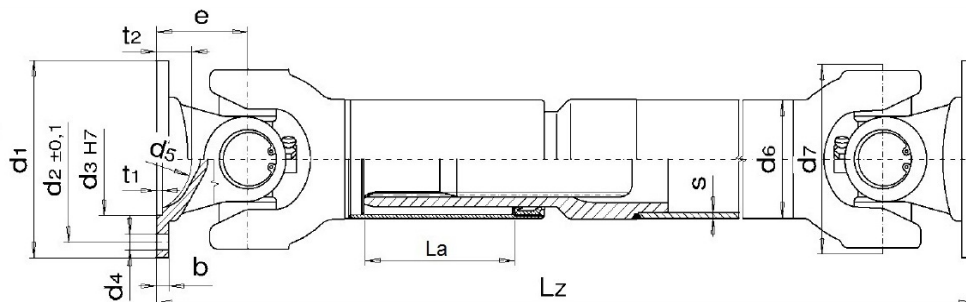


Fig.1

Fig. 2

Fig. 3

Fig.3B

DIN	Fig.	d1	d4	d3	d2	e	β max	Lz min. La=110
180	3	180	8x14.2	110	155.5	103.5	32°	657
180	3	180	8x16.2	110	155.5	103.5	32°	657
180	3B	180	10x16.2	110	155.5	103.5	32°	657
225	3	225	8x16.2	140	196	95	32°	640

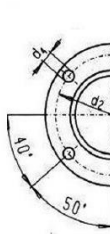
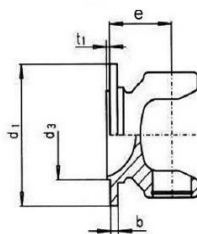


Fig. 4

Fig. 4B

Fig. 4C

SAE	Fig.	d1	d4	d3	d2	e	β max	Lz min. La=110
1800	4C	204	12x10.20	196.8	196.8	93	32°	636
1800	4C	204	12x11.20	196.8	196.8	93	32°	636

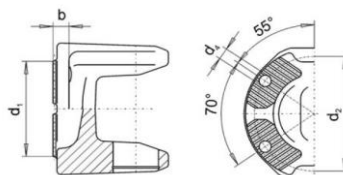


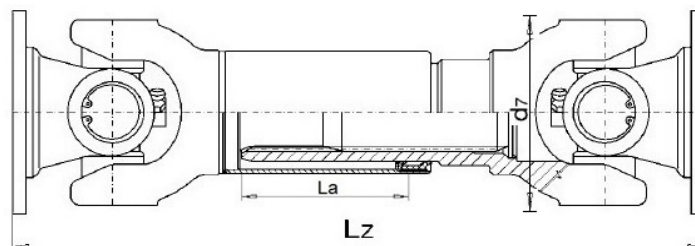
Fig.5

KV	Fig.	d1	d4	d3	d2	e	β max.	Lz min. La=110
180	5	180	4x15.10	KV/XS	150	92	32°	634

MdB= 17000 Nm - MdG= 25000 Nm

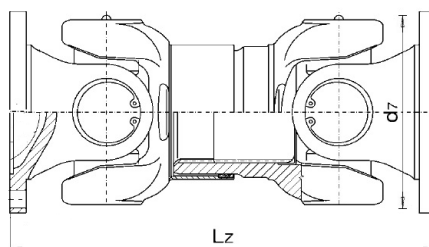
Ingombro Rotazione 178 mm

Esecuzione Cod 44 - Scorrevole corta



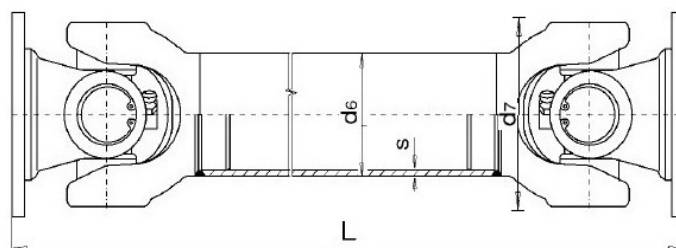
Flangia	Lz minima	La
DIN 180	501	35
DIN 225	484	35
SAE 1800	480	35
KV/XS180	478	35

Esecuzione Cod 4496 – scorrevole extra corta



Flangia	L minima	La
DIN 180	382	25
DIN 225	366	25
SAE 1800	362	25
SAE 1800	290	25
KV/XS180	394	25
KV/XS180	360	25

Esecuzione Cod 48 - Fissa

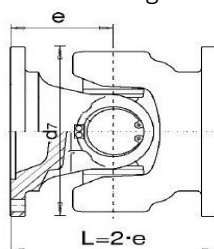


Flangia	L minima	Tubo
DIN 180	482	110x6 / 120x6
DIN 225	465	110x6 / 120x6
SAE 1800	461	110x6 / 120x6
KV/XS180	459	110x6 / 120x6

MdB= 17000 Nm - MdG= 25000 Nm

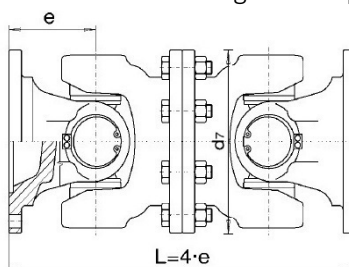
Ingombro Rotazione 178 mm

Esecuzione cod 314 - giunto semplice



FLANGIA	L
DIN 180	207
DIN 225	190
SAE 1800	186

Esecuzione cod 7675 - giunto doppio



FLANGIA	L
DIN 180	414
DIN 225	380
SAE 1800	372