

MdB= 7200 Nm - MdG= 9200 Nm

Ingombro Rotazione 145 mm

Esecuzione Cod 46  
Allungamento Standard La=110 mm

Tubo d6+S  
90x5.5 / 100x2.5

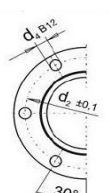
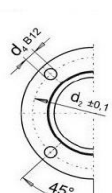
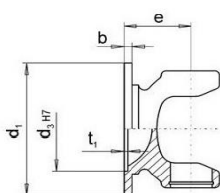
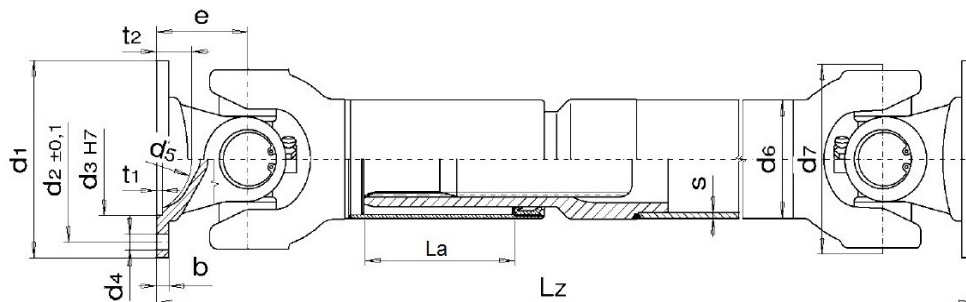


Fig.1

Fig. 2

Fig. 3

Fig.3B

DIN	Fig.	d1	d4	d3	d2	e	β max	Lz min. La=110
150	3	150	8x12.2	90	130	86	32°	562
180	3	180	8x14.2	110	155.5	86	32°	562
180	3	180	8x16.2	110	155.5	86	32°	562
180	3B	180	8x16.2	110	155.5	86	32°	562

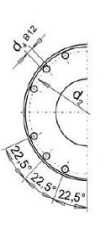
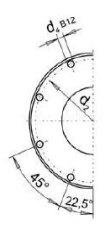
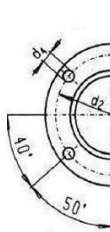
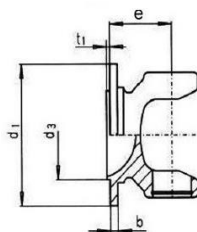


Fig. 4

Fig. 4B

Fig. 4C

SAE	Fig.	d1	d4	d3	d2	e	β max	Lz min. La=110
1600	4B	176	8x10.2	168.22	155.52	86	32°	562

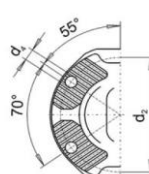
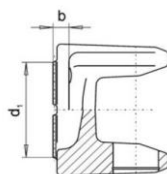


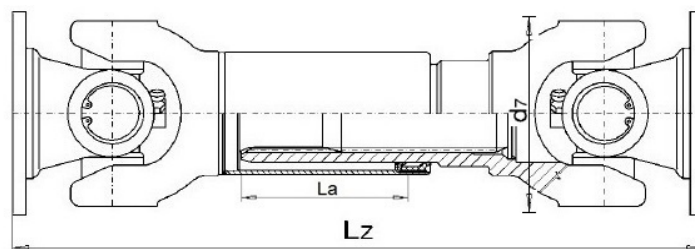
Fig.5

KV	Fig.	d1	d4	d3	d2	e	β max.	Lz min. La=110
150	5	150	4x13.1	KV/XS	130	86	32°	562

MdB= 7200 Nm - MdG= 9200 Nm

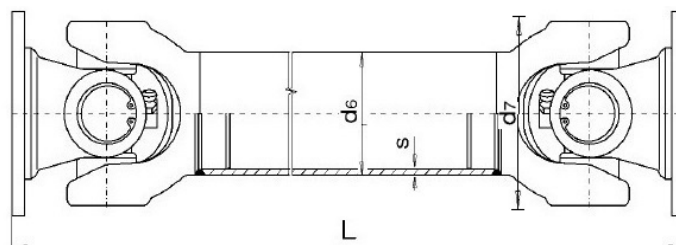
Ingombro Rotazione 145 mm

### Esecuzione Cod 44 - Scorrevole corta



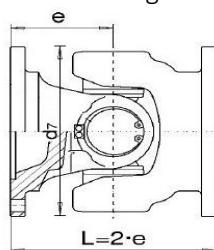
Flangia	Lz minima	La
DIN 150	440	30
DIN 180	440	30
SAE 1600	440	30
KV/XS150	440	30

### Esecuzione Cod 48 - Fissa



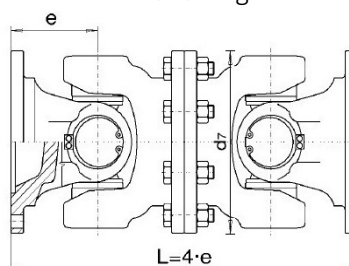
Flangia	L minima	Tubo
DIN 120	372	90x5.5 / 100x2.5
DIN 150	372	90x5.5 / 100x2.5
SAE 1600	372	90x5.5 / 100x2.5
KV/XS150	372	90x5.5 / 100x2.5

### Esecuzione cod 314 - giunto semplice



FLANGIA	L
DIN 150	172
DIN 180	172

### Esecuzione cod 7675 - giunto doppio



FLANGIA	L
DIN 150	344
DIN 180	344