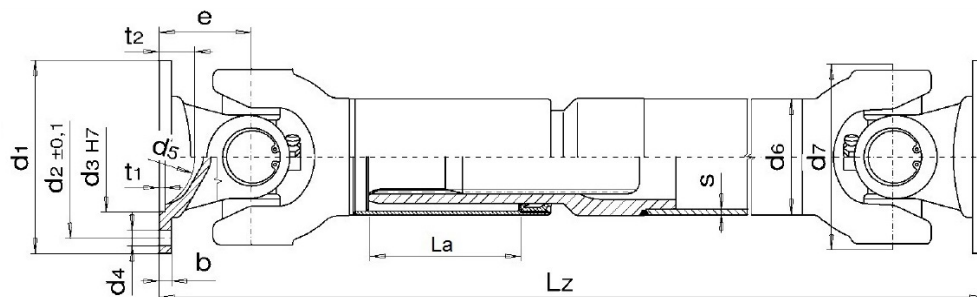


MdB= 4200 Nm - MdG= 6000 Nm

Ingombro Rotazione 136 mm

<b>Esecuzione Cod 46</b> Allungamento Standard La=110 mm	Tubo d6+S 88.9x2.41
---	------------------------



<b>Esecuzione Codice 56</b> Alto Allungamento La=250 mm	Tubo d6+S 88.9x2.41
--	------------------------

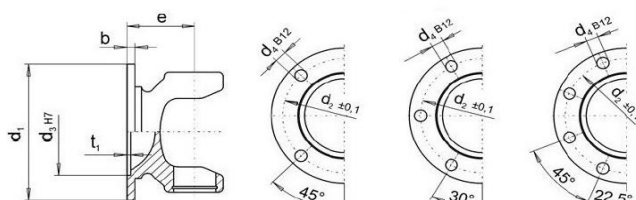
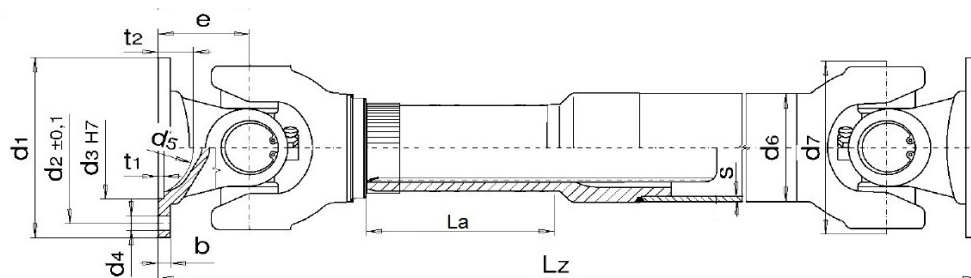


Fig. 1

Fig. 2

Fig. 3

DIN	Fig.	d1	d4	d3	d2	e	β max	Lz min. La=110	Lz min. La= 250
120	3	120	8x8.20	75	101.5	72	30°	499	680
120	3	120	8x10.20	75	101.5	72	30°	499	680
150	3	150	8x12.20	90	130	82.5	30°	520	701

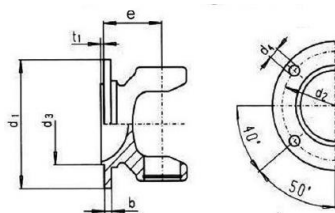


Fig. 4

SAE	Fig.	d1	d4	d3	d2	e	β max.	Lz min. La=110	Lz min. La= 250
1500	4	146	4x14.20	95.25	120.67	63.5	20°	482	663

MdB= 4200 Nm - MdG= 6000 Nm

Ingombro Rotazione 136 mm

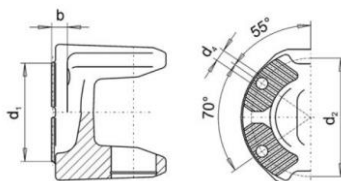
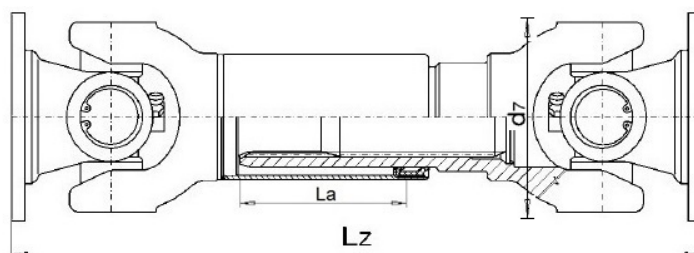


Fig.5

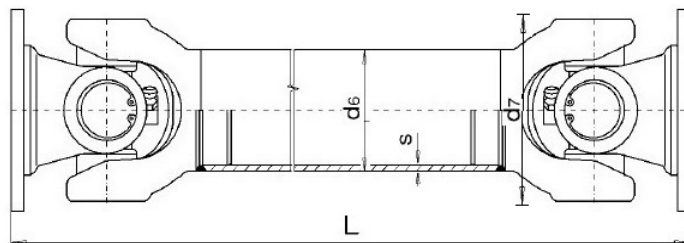
KV	Fig.	d1	d4	d3	d2	E	$\beta$ max. d6	Lz min. La=110	Lz min. La= 250
120	5	120	4x11.1	KV/XS	100	70	25°	495	676
150	5	150	4x13.1	KV/XS	130	77	25°	509	690

### Esecuzione Cod 44 - Scorrevole corta



Flangia	Lz minima	La
DIN 120	314	20
DIN 150	335	20
SAE 1500	297	20
KV/XS120	310	20
KV/XS150	324	20

### Esecuzione Cod 48 - Fissa

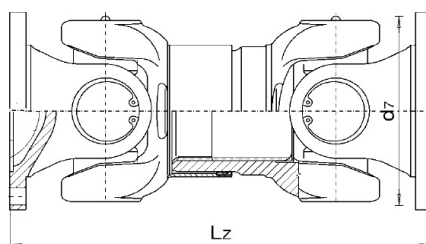


Flangia	L minima	Tubo
DIN 120	354	88.9x2.41
DIN 150	375	88.9x2.41
SAE 1500	337	88.9x2.41
KV/XS120	350	88.9x2.41
KV/XS150	364	88.9x2.41

MdB= 4200 Nm - MdG= 6000 Nm

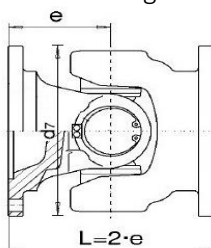
Ingombro Rotazione 136 mm

Esecuzione Cod 4496 – scorrevole extra corta



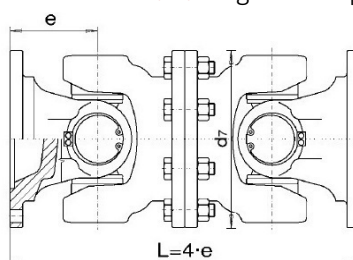
Flangia	L minima	La
DIN 120	264	20
DIN 150	285	20
SAE 1500	247	20
SAE 1500	200	20
KV/XS120	260	20
KV/XS150	274	20

Esecuzione cod 314 - giunto semplice



FLANGIA	L
DIN 120	144
DIN 150	165
SAE 1500	127

Esecuzione cod 7675 - giunto doppio



FLANGIA	L
DIN 120	288
DIN 150	330
SAE 1500	254